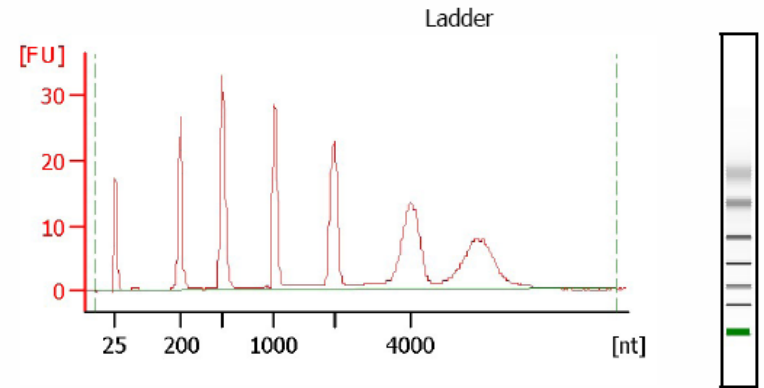


**Overall Results for sample 2 :**

RNA Area: 260.7  
 RNA Concentration: 122 ng/ $\mu$ l  
 rRNA Ratio [28s / 18s]: 1.4  
 RNA Integrity Number (RIN): 10.0 (B.02.02)

**Fragment table for sample 2 :**

Name	Start Size [nt]	End Size [nt]	Area	% of total Area
18S	1,443	1,758	80.3	30.8
28S	2,405	3,069	115.5	44.3



**Overall Results for Ladder**

RNA Area: 320.9  
 RNA Concentration: 150 ng/ $\mu$ l